



VISEC 2R12-4eQ

On-the-dot dosage with maximum volumetric precision

RANGE OF USES:

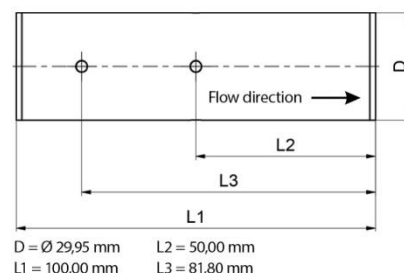
- abrasive media
- adhesives
- silicones
- sealing compounds
- fats
- oils

DESCRIPTION:

The internal geometry of the stator is based on the eccentric screw pump systems. New manufacturing processes and materials make it possible to transform the complex geometry into this small design. Media in very small quantities can be conveyed fully volumetrically forward and backward.

TECHNICAL DATA:

Dimensions	Ø 29.95 mm x 100 mm
Weight	ca. 206 grams
Dosing volume	ca. 9.10 cc/rev
Dosing accuracy ⁽¹⁾	± 1%
Repeatability	> 99%
Min. dosing quantity	ca. 0.758 cc
Volume flow ⁽²⁾	9.10 to 1,092 cc/min
Inlet pressure ⁽³⁾	0 to 6 bar
Max. dosing pressure ⁽³⁾	8 bar
Available materials	stainless steel / hi-pro Item no. P03.2R124 stainless steel / hi-per Item no. P04.2R124 stainless steel / hi-act Item no. P05.2R124



- (1) Volumetric dosing is related as absolute deviation to one revolution of the dispenser. Depends on the viscosity of the dosing medium.
 (2) Volume flow is dependent on viscosity and primary pressure.
 (3) Pressure depending on dosing medium

All trademarks and product names mentioned are the property of their respective owners or manufacturers and are used here only to illustrate the purpose and suitability of VISEC products.

V2.0 – 04/25