

## VISEC D03 micro

On-the-dot dosage with maximum volumetric precision



### RANGE OF USES:

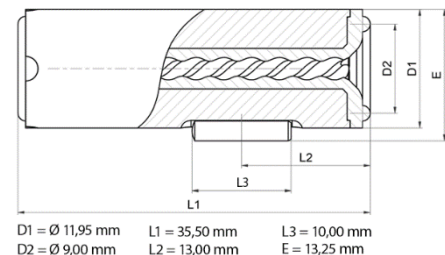
- abrasive media
- adhesives
- silicones
- cyanacrylat
- sealing compounds
- fats
- oils

### DESCRIPTION:

The internal geometry of the stator is based on eccentric screw pump systems. New manufacturing processes and materials make it possible to transform very complex geometry into this small design. Media in very small quantities can be conveyed fully volumetrically forward and backward.

### TECHNICAL DATA:

Dimensions	Ø11.95 mm x 35.5 mm
Weight	ca. 11 gram
Dosing volume	ca. 0.003 cc/rev
Dosing accuracy <sup>(1)</sup>	± 1%
Repeatability	> 99%
Min. dosing quantity	ca. 0.00025 cc
Volume flow <sup>(2)</sup>	0.003 to 0.360 cc/min
Min. operating pressure	0 bar
Max. operating pressure	0 to 6 bar
Max. dosing pressure	21 to 26 bar
Available materials	aluminium / hi-tec Item no.: P06.D03



D1 = Ø 11,95 mm    L1 = 35,50 mm    L3 = 10,00 mm  
D2 = Ø 9,00 mm    L2 = 13,00 mm    E = 13,25 mm

- (1) Volumetric dosing is related as absolute deviation to one revolution of the dispenser. Depends on the viscosity of the dosing medium.  
 (2) Volume flow is dependent on viscosity and primary pressure.

All trademarks and product names mentioned are the property of their respective owners or manufacturers and are used here only to illustrate the purpose and suitability of VISEC products.

V1.0 – 04/25